

Operating Manual for IOS APP

1. Download the Test Tools “POS-PrinterV1.0” from App Store, as below:



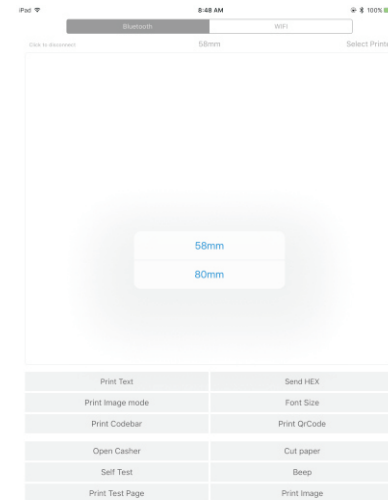
(Image 1)

2. Turn on the Bluetooth setting of IOS device, then click “POS-Printer”:



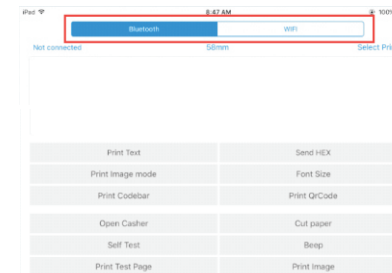
(Image 2)

3. Into the App of “POS-Printer”, select the paper width as below:



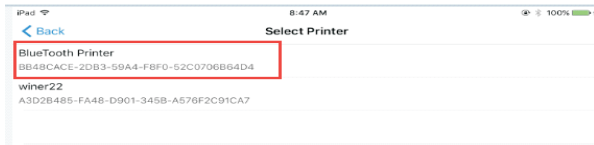
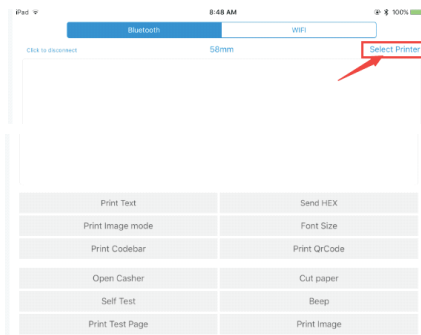
(Image 3)

4. Select the way of communication of printers, “Bluetooth” or “WIFI”:

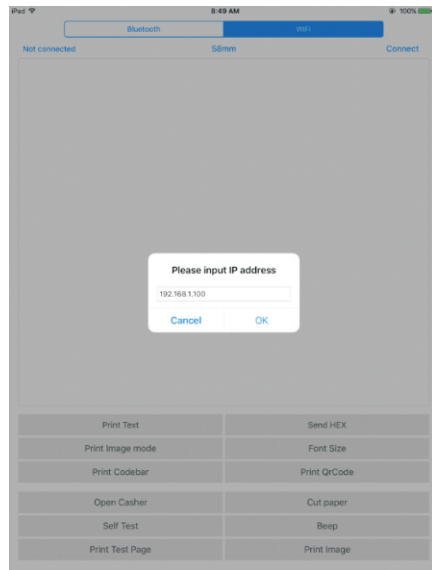


(Image 4)

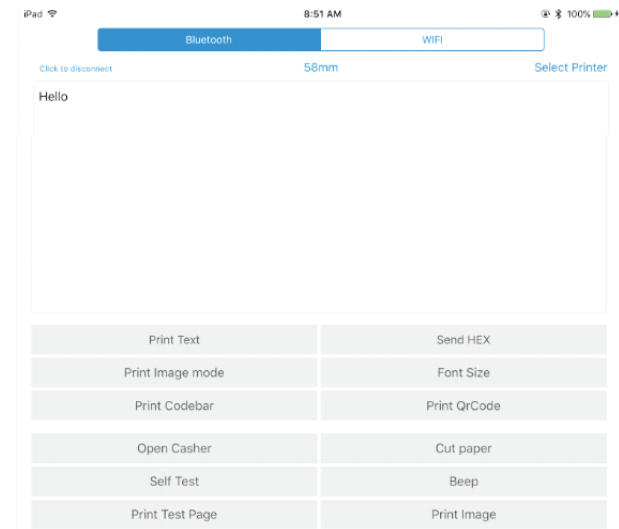
5, If connect with Bluetooth, then you can click " Select Printer" first, you will search the "Bluetooth Printer" (the default name of printer is Bluetooth Printer), click it to be connected.



6, If connect with WIFI, please make sure that your device WIFI is connected with printer (both of them in the same Network segment). And then click the " Connect", enter into the printer IP :



7, If above steps are successful, then you can print text to have a test:



8, Other features of this APP:

- ① Send HEX: In the text box, enter the hexadecimal data, click "Send HEX", then can send text box hexadecimal data to the printer.
- ② Print Image mode: input data in the text box, click "Print Image mode", you will be able to convert the contents of the text box into a image printed
- ③ Open Casher: If your printer is connected with the cash drawer, click "open casher", the drawer will be opened (portable printers without drawer interface, this feature does not work).
- ④ Cut paper: After click on it, the paper will be feed out and cut (portable printers, 58 series of printers without cutter, this feature does not work).
- ⑤ Self Test: Click the "self-test", the printer will print out a self-test page (because the Bluetooth printer has been connected to the device, then the Bluetooth name or MAC address will be not displayed in the self-test page).
- ⑥ Beep: Click the "Beep", the printer will beep sound (portable printers, 58 series of printers without buzzer, this feature does not work).
- ⑦ Print test page: Click the "Print Test Page", the text will print a section of the test, to confirm that the printer is connected and normal print successfully.

9.The applicable version: can be compatible with IOS6.0 or above versions.