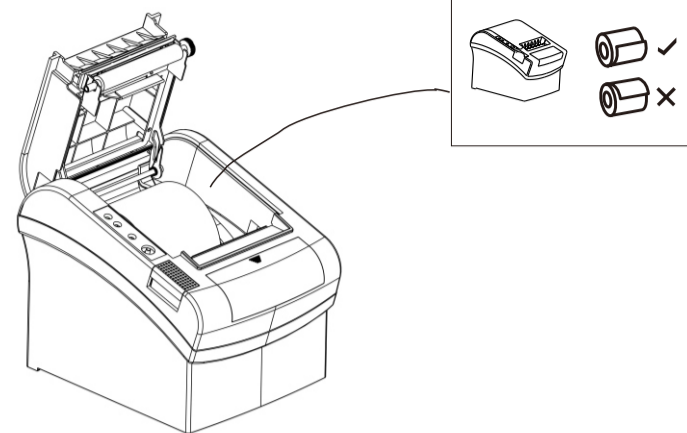
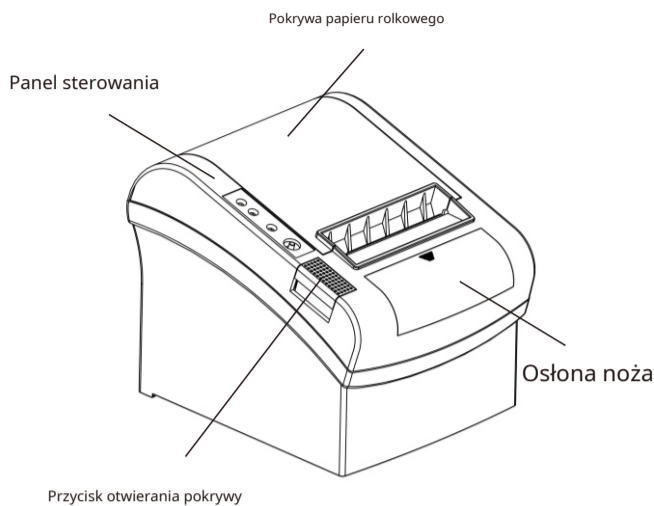
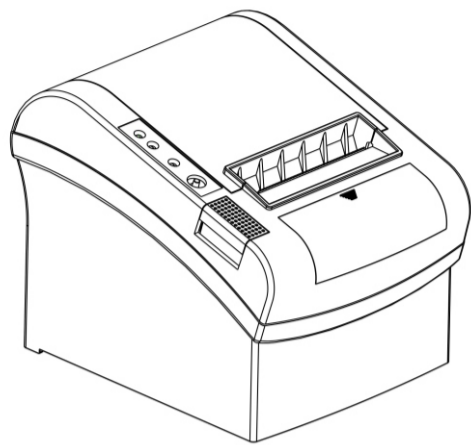


Mini drukarka pokwitowań

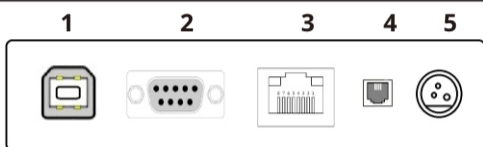
Skrócona instrukcja obsługi

OUTLOOK I ZAINSTALUJ ROLKĘ PAPIERU

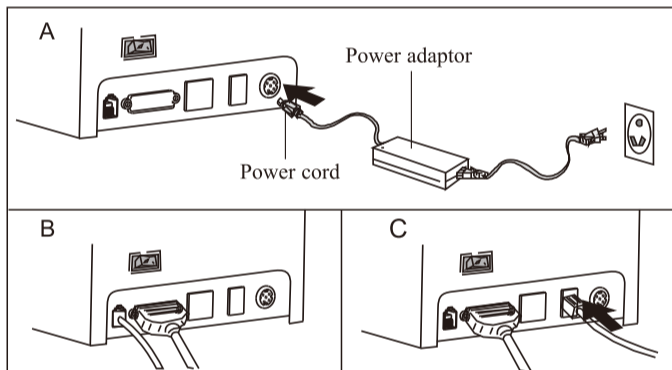


Remove the used roll paper core if any, and insert the roll paper. The correct direction of the paper is shown in the illustration below.

STEP 1 - INSTALL PRINTER



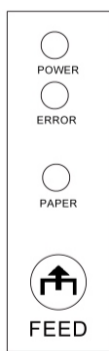
- 1) USB Port
- 2) Serial Port
- 3) LAN Port
- 4) Cash Drawer Port Rj11
- 5) Power Port



- A. Connect AC power cord to power, DC power cord to printer.
- B. Connect printer and computer/ tablet.
- C. Connect cash drawer.

Nazwa przycisku, kontrolka LED i funkcja

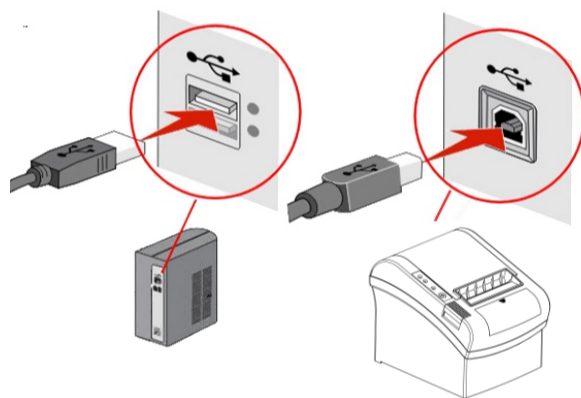
- 1. Feed Button:**
Press to feed paper manually.
- 2. Paper Indicator (LED Light):**
Blue and red lights are on means lack of paper, no alarm means all goes well.
- 3. Power Indicator:**
Light is on means connected properly.
- 4. Error Indicator:**
When out of paper, cutter or printing head overheat occurred, the ALARM indicator twinkles.



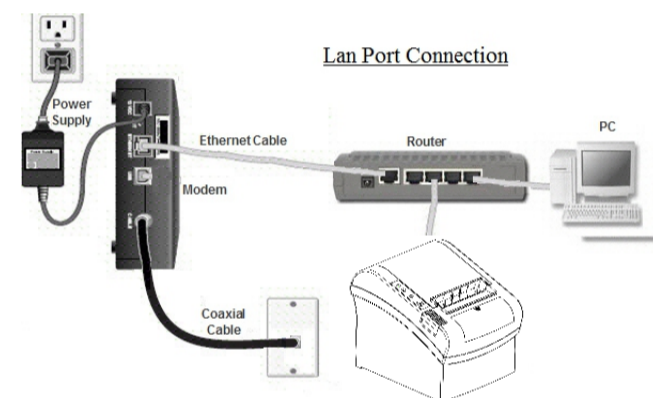
Self Test

Metoda: Gdy drukarka jest wyłączona, naciśnij przycisk „FEED” i włącz ją w tym samym czasie, 2 sekundy później zwolnij przycisk „FEED”, wydrukowany zostanie zakończony autotest, aby pokazać ustawienia drukarki.

Port USB



Port LAN

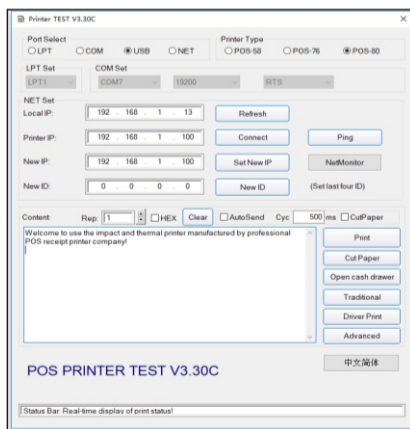


WYMIANA NARZĘDZI Drukarka IP

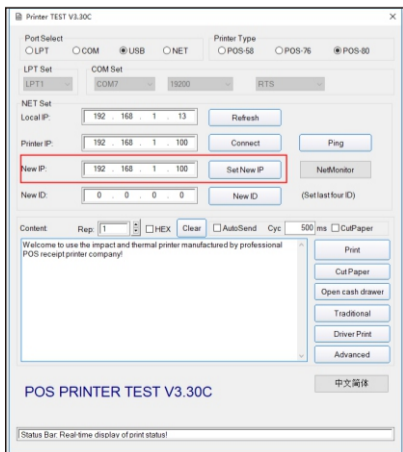
Printer Test V3.30C.exe

Printer.ini

- 1) Kliknij dwukrotnie „Test drukarki V3.3C”



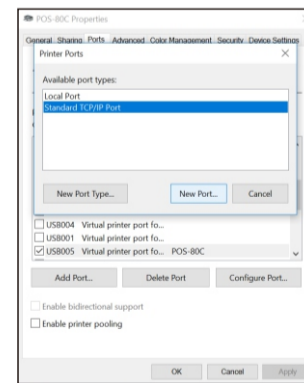
- 2) Ustawienie nowego adresu IP drukarki w nowym polu IP
- 3) Kliknij „Ustaw nowy adres IP”, po usłyszeniu sygnału dźwiękowego, nowy adres IP pomyślnie.



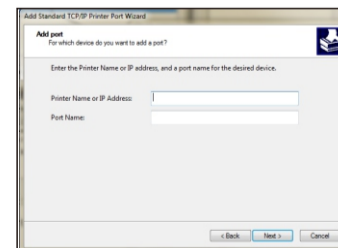
- 4) Inne ustawienie Kliknij „Zaawansowane”

Dodaj PORT IP DLA KIEROWCY

- (1) Ustaw adres IP komputera na 192.168.1.xxx
- (2) Prawy klawisz drukarki paragonów w Panelu sterowania i wybierz „Właściwości drukarki”
- (3) Kliknij „Porty” i wybierz „Dodaj porty...”
- (4) Kliknij „Standardowy port TCP/IP” i „Nowy port”

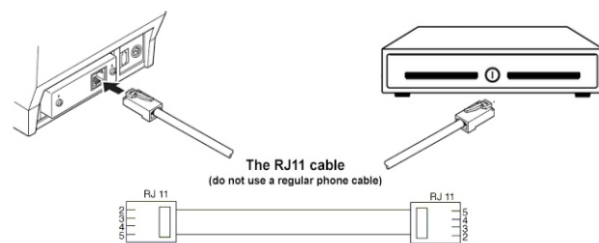


- (5) Klikaj „Dalej” do tego momentu. „Nazwa drukarki lub adres IP”, zapisz adres IP drukarki.



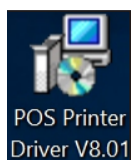
- (6) Kliknij „Dalej” aż do „Zakończ”. Następnie kliknij „Zamknij”

PORT SZUFLAD NA KASĘ (PRZEWÓD RJ11)





1) Zainstaluj sterownik w systemie operacyjnym WINDOWS (kroki jak poniżej).

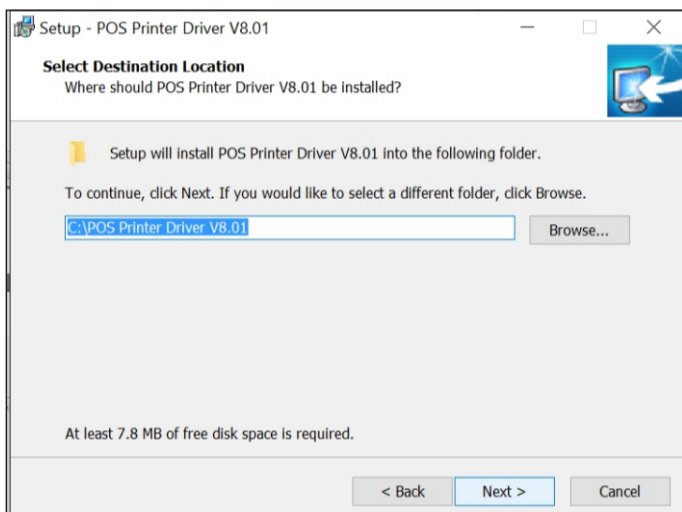


1. Kliknij dwukrotnie kierowca.



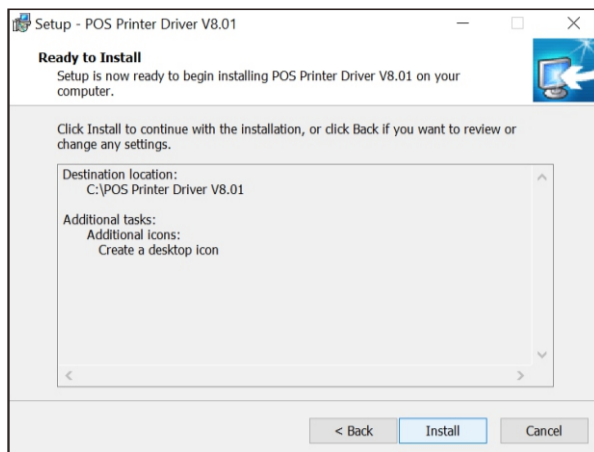
2. Wybierz: Dalej.

3. Domyślny folder instalacyjny.

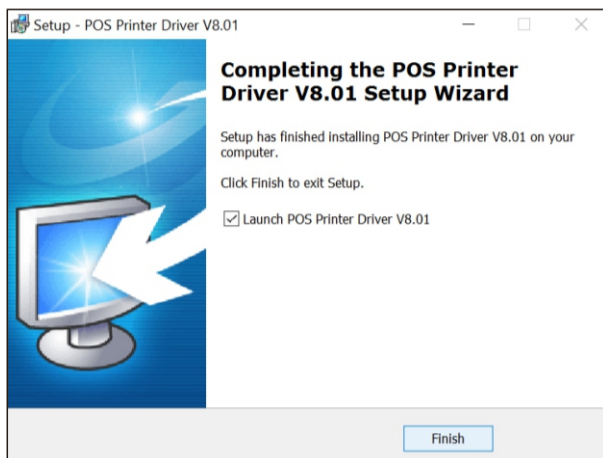


4. Utwórz skrót na pulpicie.

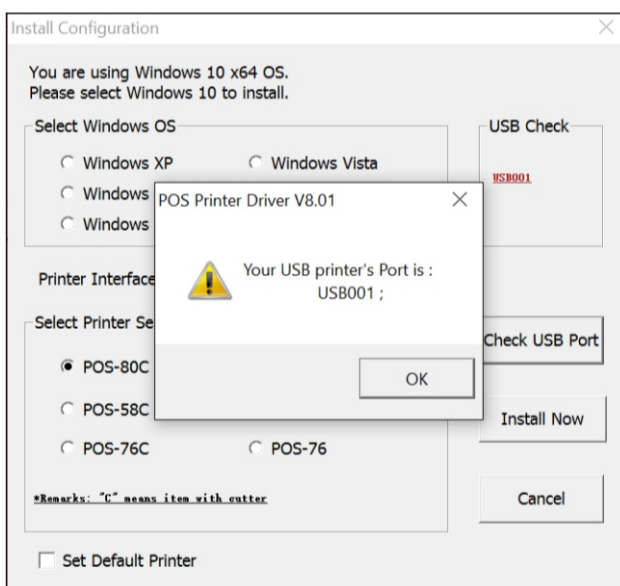
5. Zainstaluj zgodnie z poniższą instrukcją.



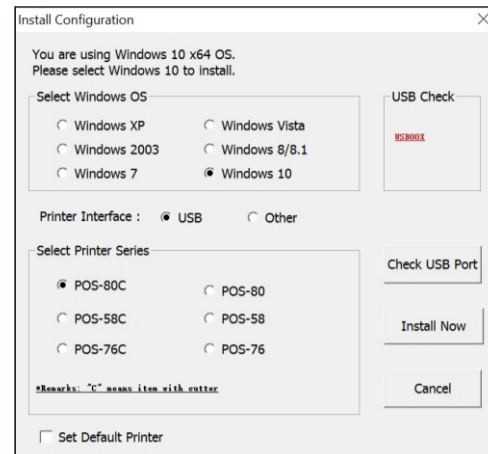
6. Gotowe.



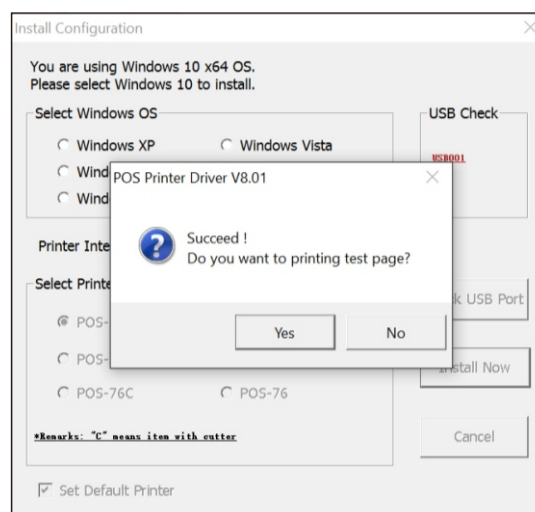
7. Wybierz właściwy port, jak pokazano poniżej:



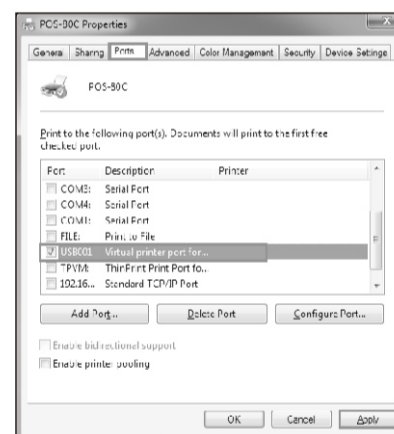
8. Wybierz odpowiednią serię, jak pokazano poniżej.



9. Click "OK" to configure the port.



10. Wybierz wykrywanie USB001, kliknij zastosuj, jak pokazano poniżej.

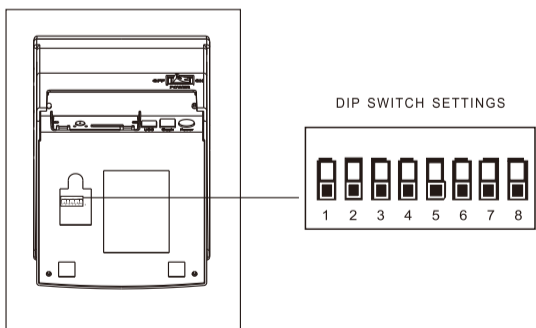


11. Finish.

USTAWIANIE TRYBU DRUKOWANIA

Setting printing Mode (DIP Switches)

DIP switches can be changed setting, such as: cutter, languages, beeper, print density baud rate etc.



DIP Switch functions

DIP Function				
No.	Function	ON	OFF	
SW-1	Select cutter	NO	YES	
SW-2	Select beeper	YES	NO	
SW-3	Cutter with alarm	YES	NO	
SW-4	Two-byte character code	NO	YES	
SW-5	Character per line	42	48	
SW-6	Virtual Com to USB	YES	NO	
SW-7		ON	OFF	ON
SW-8		ON	ON	OFF
Transmission speed (bps) - bit/s	38400	115200	9600	19200

KONSERWACJA ZACIĘTEGO OBRAZU

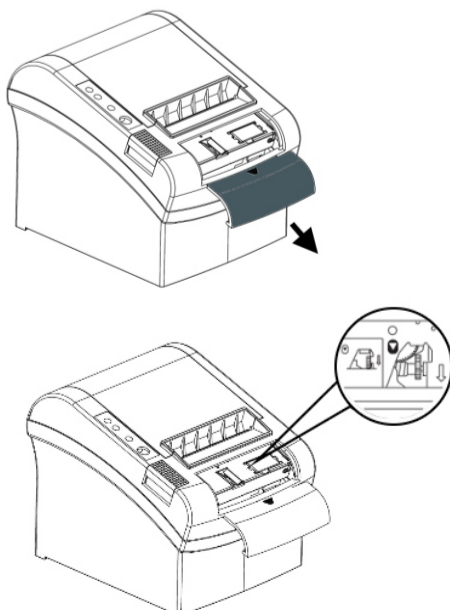
Konserwacja zablokowanego noża

Method (1)

Turn off the power and then restart.

Method (2)

Turn the gear on printing head, cutter can be returned to its original position.



Notice: To avoid the damage of the printing head and automatic paper cutter, please do not open cutter and mechanism violently.

CZYSZCZENIE I KONSERWACJA

Clearance

One of the following occurred, please clean printing head.

- (1) Printing is not clear.
- (2) Any vertical is not clear.
- (3) Paper feed noisily.

Printing head cleaning steps:

- (1) Turn printer off, release power cord. Open top cover, take out paper roll.
- (2) Wait till printing head cooling if it just finished printing.
- (3) Clean printing head completely using swab with alcohol (without water).
- (4) Until alcohol completely volatilized, close top cover.
- (5) Connect power again, print self test to check if it is clean.

Notice:

- (1) Please make sure power off when maintaining printer.
- (2) Don't touch or scratch printing head surface, roller and sensor.
- (3) Avoid gas, acetone or other organic solvent.
- (4) Wait till alcohol completely volatilized, close top cover and connect power again. Try print self test to make sure it works properly

Warning:

No part of this manual can be changed without agreement. The company reserves the right to modify the technologic, components, software and hardware. You may ask the distributors for more product information. No part of chapter in this manual can be copied or transmitted in any format without permission.